



RI Thread reducer/expander
Male BSPP thread - metal sealing edge (ISO 1179) / Female BSPP thread (ISO 1179-1)

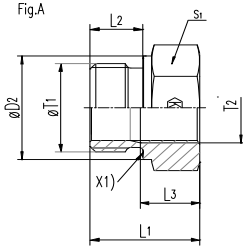
RD DİŞLİ REDÜKSİYON

Sipariş kodu

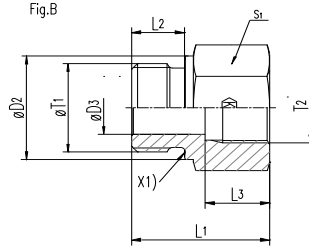
Order code

RD...(242....)

Tip / Type A



Tip / Type B



X1) metal sealing edge

T1	T2	D2	D3	L1	L2	L3	S1	Type Tip	Weight g/1 piece	ITEM CODE	ITEM NAME
										PARÇA KODU	PARÇA ADI
G 1/4A	G 1/8	18	5	28	12	12.0	19	B	38	242010402	RD1/4"-1/8"
G 3/8A	G 1/8	22	-	22.5	12	8.0	22	A	38	242010602	RD3/8"-1/8"
G 3/8A	G 1/4	22	8	36	12	17.0	22	B	69	242010604	RD3/8"-1/4"
G 1/2A	G 1/4	26	-	24	14	12.0	27	A	50	242010804	RD1/2"-1/4"
G 1/2A	G 3/8	26	12	36	14	17.0	27	B	92	242010806	RD1/2"-3/8"
G 3/4A	G 1/4	32	-	26	16	12.0	32	A	101	242011204	RD3/4"-1/4"
G 3/4A	G 3/8	32	-	26	16	12.0	32	A	85	242011206	RD3/4"-3/8"
G 3/4A	G 1/2	32	16	41	16	20.0	32	B	145	242011208	RD3/4"-1/2"
G 1A	G 1/4	39	-	29	18	12.0	41	A	194	242011604	RD1"-1/4"
G 1A	G 3/8	39	-	29	18	12.0	41	A	181	242011606	RD1"-3/8"
G 1A	G 1/2	39	-	29	18	14.0	41	A	150	242011608	RD1"-1/2"
G 1A	G 3/4	39	20	47	18	22.0	41	B	272	242011612	RD1"-3/4"
G 1 1/4A	G 1/2	49	-	32	20	14.0	50	A	314	242012008	RD1 1/4"-1/2"
G 1 1/4A	G 3/4	49	-	32	20	16.0	50	A	263	242012012	RD1 1/4"-3/4"
G 1 1/4A	G 1	49	25	52	20	24.5	50	B	466	242012016	RD1 1/4"-1"
G 1 1/2A	G 1/2	55	-	36	22	14.0	55	A	473	242012408	RD1 1/2"-1/2"
G 1 1/2A	G 3/4	55	-	36	22	16.0	55	A	423	242012412	RD1 1/2"-3/4"
G 1 1/2A	G 1	55	-	36	22	18.0	55	A	345	242012416	RD1 1/2"-1"
G 1 1/2A	G 1 1/4	55	32	58	22	26.5	55	B	528	242012420	RD1 1/2"-1 1/4"

PN (bar) = PN (MPa)

10

Çinko Kaplı / Zinc plated=Cr(VI)-free